

# Lapal Link

Newsletter of the  
Lapal Canal Trust

Autumn / Winter

2021



# Contents

## Advisory Board

## Committee Members

## Chair's Introduction and Remembering Terry Stanton

## Notice 'Walk the Line'

## News Items

### Progress with work

- |                          |                        |
|--------------------------|------------------------|
| 1. Winding Hole progress | 2 Planning Application |
| 3. Fundraising progress. | Cadbury family         |

### Engaging with the Community

- |                       |                                  |
|-----------------------|----------------------------------|
| 4. Working with Sense | 5. Presenting to Local Societies |
|-----------------------|----------------------------------|

### Volunteer Work Parties.

6. Birmingham University Students. 7. Leasowes Clearing. 8 litter picking

### General Items

- |                                 |                |
|---------------------------------|----------------|
| 9. Political support            | 10. Award      |
| 11. Archiving and Oral history. | 12. Canal Ring |

## Membership Application and Standing Order Form

## Advisory Board to Oversee and Advise the Lapal Trust Committee.

<b>John Hudson OBE.</b>	Chair of C&RT West Midlands Advisory Board Formerly High Sheriff of West Midlands and for 20 years Chairman of Birmingham Airport.
<b>Peter Mathews CMG.</b>	Past Chair of West Midlands Waterways Partnership.
<b>John Cloughton.</b>	Retired Chief Master of King Edwards School.
<b>Steve McCabe.</b>	MP for Selly Oak.
<b>Laura Shoaf.</b>	Managing Director Transport West Midlands.
<b>David Cox OBE.</b>	Bike West Midlands Network.
<b>Traci Dix-Williams.</b>	CEO Dudley Canal & Tunnel Trust.
<b>Beverley Nielsen.</b>	Director of Institute for Design & Economic Acceleration (IDEA), Birmingham City University.
<b>Anthea McIntyre.</b>	Former MEP for the West Midlands.
<b>Tristan Chatfield.</b>	Councillor for Weoley and Selly Oak Ward.
<b>Nicholas Crombie.</b>	Trustee Birmingham & Black Country Wild Life Trust.

# Lapal Canal Trust Committee Members

## President

**Dr Peter Best**

## Chair

**Dr Andrew Hardie**

## CEO

**Hugh Humphreys OBE**

## Treasurer & Membership Secretary

**Dr Tony Whateley**

## Technical Officer

**Peter Fisher**

## Volunteer Co-ordinator

**Denis Pike (WB&DCS)**

## Leasowes Liaison

**Roy Burgess (Halesowen Abbey Trust)**

**Dave Pearson (IWA/ BCNS)**

## Justin Malpass Fundraising & Web site

**John Hemingway (WB&DCS)**

**John Worwood (Calthorpe Res Soc.)**

**Michael Payne (IWA) Deputy Treasurer**

**David Scowcroft - Fundraising**

**Richard Chivers**

**Kerry Brewer**

**Neil Frank**

**Chair of Birmingham University Conservation Volunteers**

**Malcolm Bates**

**David Struckett (IWA)**

**John Lines - Publicity Officer**

**Janella Kolas**

**Arthur Moppett**

**Monica Hardie**

**Dominic Stanford**

**Paul Smith**

Biographies of our committee can be found on our web site [www.lapal.org](http://www.lapal.org)

## Advisors

### Environmental & Ecology

**Mary Green WB&DCS**

### Legal

**Toni Weston Partner Gowling WLG**

### Financial

**Laurence Parkes Parkes & Co**

Founded in 1990 for the conservation and restoration of the Dudley No. 2 Canal from Hawne Basin, Halesowen to Selly Oak.

The Lapal Canal Trust is a registered charity (no 1013845) and a non-profit distributing company limited by guarantee, registered in England (no 2721675). Registered Office: 18 St Georges Close, Birmingham B15 3TP.



[www.lapal.org](http://www.lapal.org)

[www.facebook.com/lapalcanaltrust](https://www.facebook.com/lapalcanaltrust)



## Andrew Hardie – Chair's Report

Welcome to our Newsletter with information on current activity and future plans. Some items are similar to the last issue so that people reading the Newsletter for the first time have a clearer view of the whole project. We are immensely grateful for the support we have received, with the latest donation taking the total raised to over half a million pounds; but we still need to raise a similar amount to fund extending the restoration past Sainsbury's. We have recently submitted a revised planning proposal with costs being reduced. We are driven by the knowledge that we risk losing the £724k Section 106 Agreement if we fail to start on the final section before November 2025.



Very sadly after a long illness Terry Stanton one of our most active committee members died recently. The family have very kindly made a generous donation to our funds. At Terry's funeral his brother Barry recalled Terry's life and his lifelong interest in canals and the following note is based on this.

## Remembering Terry Stanton (1940 to 2021)

Terry was a keen supporter of the Lapal Canal Trust and a committee member since 2012. He was chair 2016-18, before ill health forced him to retire. He will be greatly missed by his many



friends. His wife

Janice, family and friends have very kindly donated £1500 to our restoration fund. Terry was a conscientious Chair and led many of the initiatives to restore the first part of the canal past Sainsbury. During his time as member and chair he helped to arrange work parties run by the Inland Waterways Recovery Group Volunteers, and despite his ill health was always available to help and supervise – with his white hat and his 'high viz' jacket.



Barry, Terry's brother recalls Terry's interest in boating and canals.

"Terry was born and lived in Handsworth Wood Birmingham until 1949. On moving to Selly Oak in 1949 we discovered, not far from our new home, a derelict canal and canal tunnel which turned out to be the east end of the Dudley No 2 line and the Lapal tunnel.

This was the start of Terry's life long interest in boating and canals. In the early 1950s Terry was at Kings Norton Grammar School together with the Treasurer, Tony Whateley: it was there that Terry built himself a two man canoe; a PBK15 canvas covered one, and we went on various expeditions on the local canals, down the Avon and River Wye ( We almost got swept out to sea!) He also took the canoe into the Lapal Tunnel just before it was sealed off. (It had part fallen in in 1917). He only went in a few hundred yards, when he saw the sagging roof and made a quick exit.



### **Then came Kubina.**

By now Terry was at work and with his newfound wealth he decided to acquire a narrowboat. In 1961, whilst helping on the restoration of the Stratford Canal, he followed up a tip from a working boatman that there were old sunken horse boats on the canal in Oldbury.

Terry negotiated with Thomas Clayton Ltd to purchase a 70-foot-long butty (ex horse boat) for the principal sum of £20 complete with a money back guarantee if it sank within a week. It didn't, and a few weeks later the good ship Kubina was towed from Tat Bank to Deepfields near Wolverhampton, where we set to converting her. Some time passed and having shortened Kubina to 57ft 6inches, built a cabin, a new stern, fitted two different engines and built a gear box, we cruised her to Stoke Bruerne and Manchester,

Terry's career path then took him to Reading, and his boating continued with a daily commute in a rowing boat from his accommodation in a converted sail loft on an island in the Thames.

Eventually Terry returned to Birmingham and, in time, he set up his own business, Second City Broadcast Facilities, providing technical services to the BBC and ITV for programmes that included "The Sky at Night". He also joined the Royal Television Society.

In 1992, Stanton received Radio Television Society Midlands' Baird Medal to mark his outstanding contribution to television. He also served four years as chair of the centre.

At 80 one should be enjoying one's second childhood – if, that is, one ever left one's first! By 2018 Terry had served 50 years on the Society's Midlands committee including 4 years as

Chair of the centre, and, in June of that year, his fifty years' service was recognised with a certificate from the Society.

Terry travelled the canals on Kubina over the years but, eventually, she took up retirement at Sherbourne St Wharf in the centre of Birmingham.

One November the 5th, in the early 1990's, the tar sodden hulk had a glorious send off, and burnt so fiercely that she cracked the concrete beneath.



I purchased a new steel hull in 1996 and with Terry's agreement called her Kubina. Later Terry also bought a new boat and named her Kalliope after Julian's first boat. The two boats currently moor together at the Black Buoy Cruising Club at Knowle".

**Walk the Line** Please join us by the Scout Hut at noon on September the 11<sup>th</sup> to walk the route of the canal to the Leasowes, it's a leisurely 6 mile walk and takes about 4 hours, with a stop in California and the Woodgate Valley visitor centre. Transport will be arranged to bring you back.

## Progress with the work

### 1. Winding Hole.







restoration. The work is completed in two parts; the first part shown in the pictures includes the Sheet Metal

Land and Water Services Ltd have done a great job completing the first half of the Goodman's/Whitehouse Wharf development and the bridge is now open for everyone to use to access

Sainsbury's. Next step is to build the new turning area as the first part of our



Having completed a tendering process, the Trust have signed a contract with Land and Water Services to construct the Winding Hole; detailed plans were



*Andrew and Kevin Kirkland signing the contract*

available mid-September 2020 for approval by the Canal & River Trust and the Highways Department. We expected to start work before Christmas. So why the delay? We need to reach agreement with three landowners, The Canal & River Trust owns the freehold, Ramheath – a Sainsbury's property company owns the main lease and M&G Real Estate has what is referred to as a pie crust lease, i.e. the surface and everything above. All the parties kindly agreed that the best solution would be for the two leases to be surrendered to the Canal & River Trust. Unfortunately, it's a 19-page agreement with 4 parties and their lawyers. Mix in illness, covid restrictions, and holidays and it's taken a very long time. Almost there, so we hope to start in September. Grateful thanks to all the parties helping us.

## Volunteers clearing vegetation

In order to clear the vegetation to allow the new winding hole to be built we had to remove two sycamore trees. So, armed with a permit from C&RT the work was completed by our volunteers in April; in due course we will be planting a lot more trees. Big thank you to Denis and Peter helped by Justin, Arthur and Hugh. Denis did



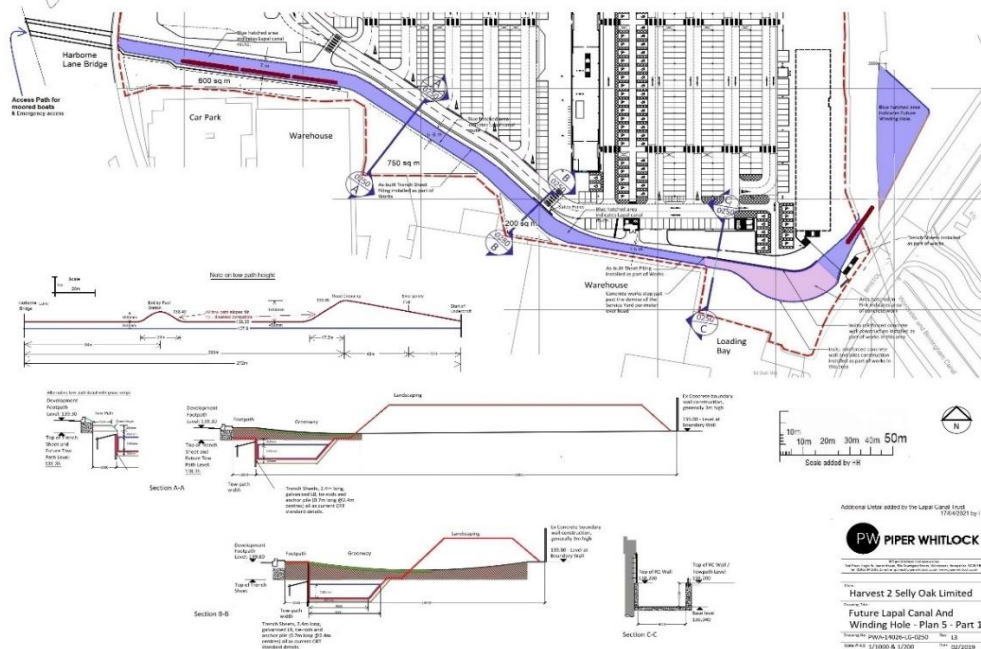
most of the tree cutting and wrote the risk assessment approved by C&RT, Peter provided the safety boat and the method statement and assisted Denis. Arthur acted as banksman ready to alert passing boats, with Justin and Hugh helping to clear up and pulling on the rope! Everything went like clockwork, trees falling exactly as required – apart from the weather with a bitterly cold wind and even hail stones. Fortunately, it brightened up later. Next day all the wood has been recovered and were safely on board 'Solar' Peter's boat which also acted as our safety boat during the tree cutting. Peter stores the twigs, cut to six-inch lengths, in two very large bags. Big thanks to Peter, Anthony, and Hugh. The wood will keep Peter's boat warm in winter, with Hugh turning some of the larger logs into bowls – so nothing wasted.





## 2. Planning Application

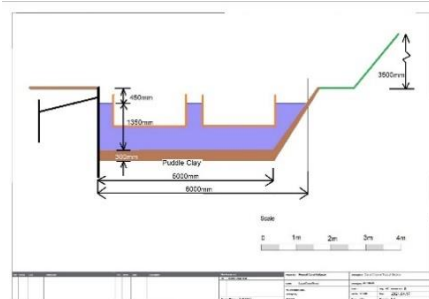
The restoration work is covered by three planning applications; for restoration of the swing bridge and the canal past Sainsbury's planning approval was granted in 2017. the canal is wider than strictly needed and our committee agreed to reduce the width in order to better manage the cost, and also to provide for more soil to be retained on site in accordance with best sustainable practice.



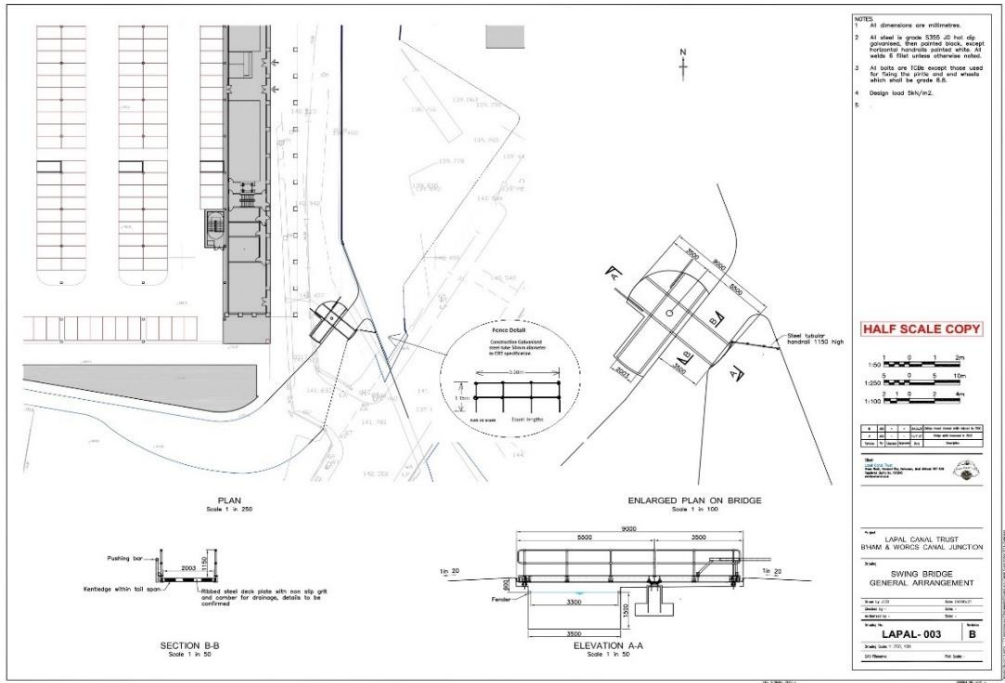
*Plan view with Sections; for a clearer picture please visit our web site*

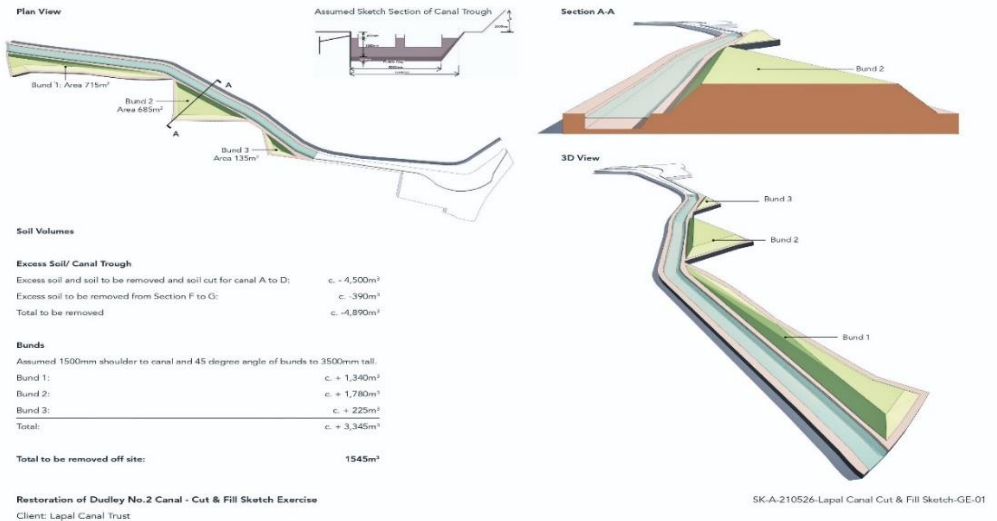


### Plan view with Swing Bridge



### Typical Canal Cross Section





### 3.Fundraising

With Covid creating many difficulties for charities fundraising has been more difficult, but the situation seems to be improving. At the beginning of the year, we were very pleased to

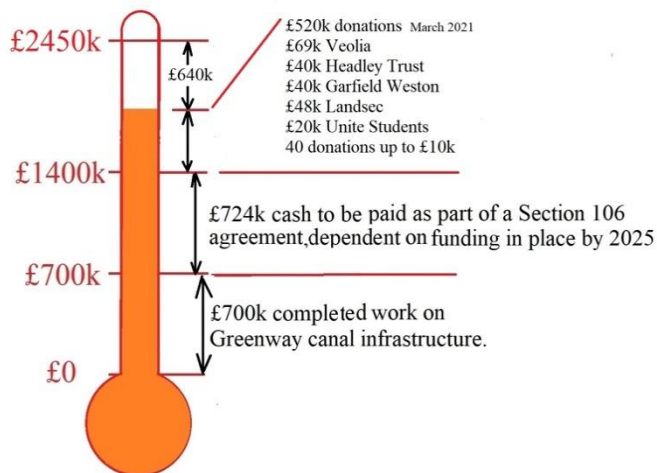


have received £75,000 from the Veolia Environmental Trust as part of the Landfill Communities fund. This completed the funding needed for the Winding Hole. The information was released as a press release with supportive quotations from Adnan Saif, regional Director of the Canal and River

Trust, Brigid Jones Deputy Council Leader and Andy Street Mayor of the West Midlands Our Facebook entry reached 11,500.

We also received £15,000 from the William Cadbury Charitable Trust; we were delighted to receive this additional support from the Cadbury Family Trusts. Cadbury family has supported canals from 1870 and we are sure you will enjoy reading more detail about the Cadbury family.





In addition we would like to thank the following for their generous contribution to this project - Headley Trust, Careys, GJW Turner Trust, Henry James Sayer Charity, Worcester Birmingham & Droitwich Canals Society, Inland Waterways Association, Heritage Lottery Fund, Jabbs Trust, Rowland Trust, Grimmitt Trust, Patrick Trust, Gowling

WLG, Geoff Hill Trust, Collins /Sayer Trust, Birmingham Common Good Trust, Richardson Foundation, Cook & Wolstenholme Charitable Trust, P G Sharpe, Keith & Joan Mindelson Charitable Trust, Bernard Piggott Charitable Trust, Dumbreck Charity, Edward Cadbury Charitable Trust, CB & HH Taylor 1984 Trust, donation in memory of Dr Ian Langford and Thomas Hickman, subscribers of canal magazines. Beekeepers Association, Bournville Society, Richard Cadbury Charitable Trust, Langdale Trust, Saintbury Trust, The Roger & Douglas Turner Charitable Foundation, Selly Park Gardening Club, Birmingham Canal Navigation Society, Ratcliff Foundation, John Feeney Charitable Trust, Tim Watts of Pertemps, Aviva, Unite Students, Aurelius Charitable Trust and many members of the Lapal Canal Trust.

The trust is actively looking for more financial support. Contact details for donations can be found at the back of this Newsletter and on the web site: [www.lapal.org](http://www.lapal.org) or on our Facebook page: [www.facebook.com/lapalcanaltrust](https://www.facebook.com/lapalcanaltrust)

The Trust is a Charity recognised by Amazon Smile so please when ordering from Amazon [smile.amazon.co.uk](https://smile.amazon.co.uk) use Amazon Smile with the Lapal Canal Trust as your nominated charity. The trust will receive 0.5%

## Cadbury Family Trust

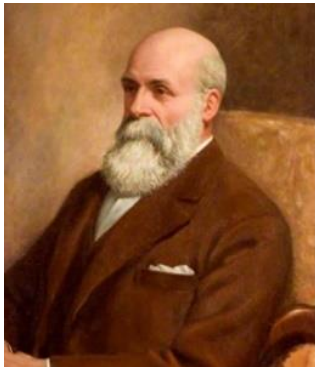
The Cadbury Family Trusts have for many years been a generous supporter of our restoration project and we have been supported by the Richard, William and Edward, Cadbury Family Trusts,

The Cadbury family have long been canal supporters with the Bournville Factory built by the Worcester Birmingham Canal in 1879 and was dependant on the canal to bring in raw materials and transport finished goods; much was done to support the development of the

canal. Boats delivered raw materials from 1879 to 1961 In February 1961 the last 30 ton load of chocolate crumb left Cadbury's Frampton Milk Depot on the Sharpness Canal for Bournville,

Cadbury had their own wharf at Bournville known as 'Waterside'. They had their own fleet of narrow boats and also made use of other canal carriers. Following WW1 with the canals returning to their somewhat reluctant owners, trade continued to decline along the Worcester & Birmingham Canal which was facing the possibility of closure. At this time George Cadbury set up a guarantee fund to offset the canal company's losses of about £3,500 per annum. The subsidy, which was up to £2,000 per year (£90,000 today value) and included several other firms. At the same time Cadbury's had proposed that the W&B should be widened below their Blackpole wharf in Worcester in order to accommodate their large cargoes from the Bristol area rather than having to trans ship onto narrow boats.

## Cadbury Family



*Richard Cadbury*  
1835 - 1899

The Cadbury family moved from Exeter to Birmingham in 1794, originally drapers with John Cadbury starting a tea and coffee business. His two sons Richard and George started the Cadbury chocolate business in 1861, the business was very successful, and land was bought in Bournville where the chocolate factory was opened

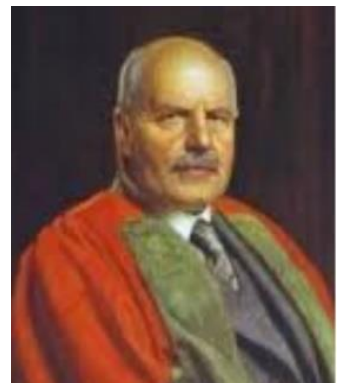


*George Cadbury*  
1839 - 1924



*William Cadbury*  
1867 - 1924

Both William (Richard's son) and Edward (George's son) worked in the company. Edward was Managing Director and Chairman. The William Cadbury Trust was founded by William in 1923 to further his charitable interests. William was the second son of Richard Cadbury, who, with his younger brother George, started the manufacture of chocolate under the Cadbury name. They came from a family with strong Quaker traditions which influenced



*Edward Cadbury*  
1873 - 1948

William's whole life. It was this Quaker ethos which underpinned his commitment to the advancement of social welfare schemes in the City of Birmingham. William Cadbury established the Trust soon after his two years as Lord Mayor of Birmingham from 1919 to 1921, wishing to give more help to the causes in which he was interested. One such was the building of the Queen Elizabeth Hospital, to bring together the small, specialised hospitals scattered throughout Birmingham. The famous Cadbury logo is based on William's signature. The current Chair of the Trust is his great-granddaughter Sophy Blandy.



## Engaging with the community

The Lapal Canal Trust Committee warmly encourages everyone interested to participate in planned events, share their views, and help us to decide on development of the restoration of this important historic Birmingham Canal. In particular we would like to thank the Community Partnership for Selly Oak (CP4SO). It's an umbrella organisation bringing together a number of groups in the ward for the purpose of injecting a local, community view into the planning process. The group also has direct representation from local residents and businesses. Supporting groups are as follows Selly Oak St Mary's Neighbourhood Forum. Frederick Rd and Rachel Gardens Residents Association. Lodge Hill Rd Residents Association, Friends of Selly Oak Park, Friends of Westhill Playing Fields, 1st Ariel, 113rd Birmingham Scout Group, Tiverton Area Residents Association (Neighbourhood Forum), Warwards Lane / Ten Acres Residents Group, Harborne Lane Allotments Association, Langleys Rd Neighbourhood Watch, Selly Park South Neighbourhood Forum, Selly Oak Local History Group, Selly Park Property Owners Association, Weoley Hill Village Council, Gristhorpe Rd Residents Group

### 4. Working with Sense

Unfortunately, with Covid restrictions our monthly boat trips for SENSE had to be postponed. We look forward to resume as soon as it is safe with Jon Fearn and Helen Ogbourn and their team of dedicated carers..







## 5. Presenting to Local Societies

The Trust is always interested to giving presentations on the History and Restoration of the Dudley No 2 Canal. If you would like a presentation, please contact Hugh on [nbhugh@gmail.com](mailto:nbhugh@gmail.com). During the last few months, we were delighted to make a ZOOM presentation to the Edgbaston Rotary Club



### **Dudley No 2 Canal**

**Past and Future of the Eastern half**  
Presentation to the Rotary Club  
Edgbaston Convention on the  
12<sup>th</sup> of April 2021



*Presentation to BCNS*

# Volunteer work

## 6. Birmingham University Students



Big thanks to Chloe and Lawrence and the Birmingham University Conservation Volunteers (BUCV) for help in removing the last year's growth on the path and the canal route in Harborne



Wharf. Nice to see the path clear of Brambles. One of the self-seeded trees along the canal route was rescued and replanted. Special thanks to Lawrence who has an uncanny knack of finding a sunny period despite the forecasted heavy rain.



## 7. Clearing at the Leasowes

This year Peter and his group of about 20 volunteers had monthly work parties and managed to clear an amazing amount of growth. The work area was a 90m strip at the East end of the route.





So big thanks to Adrian the Warden and to Peter for arranging and taking special care to keep social distancing. and to all the volunteers. Some living locally and some travelling many miles.

With concern to keep our volunteers safe the February Scrub Bash was postponed. But there was no stopping Peter, he checked with the park warden and police to make sure he was not breaking the rules - voluntary outdoor activity with social distancing is allowed. So, despite the snow Peter, our work party leader, was busy making progress, planning to do a lot more before bird nesting brings the winter work programme to a halt.



Roy and Tony with their shovels clearing the slipway and the rest of us were busy clearing the self-seeded trees damaging the canal route. Thanks to everyone for very good progress, worth coming to have a

look. We were very pleased to meet Lisa Buffery headmistress of the Manor Way primary school right by the canal and they are very interested in being involved.



Demonstrating the work of volunteers is a huge help for our fundraising effort. Peter and his volunteers have over two winters





cleared self-seeded trees from a 90-metre length of canal route (see pictures). It will save much larger

costs later – a stitch in time saves nine. The cut logs when dried are used by Peter to keep his boat home warm in winter, and for most of the year Peter's electrical needs are met by solar panels– a true ECO warrior.

Refurbished sign for the Leasowes - One of our volunteers helping to clear the overgrowth at the Leasowes very kindly offer to make a new sign. So big thanks to Jay for producing the sign and to Dave and Justin for putting it up. Job well done!

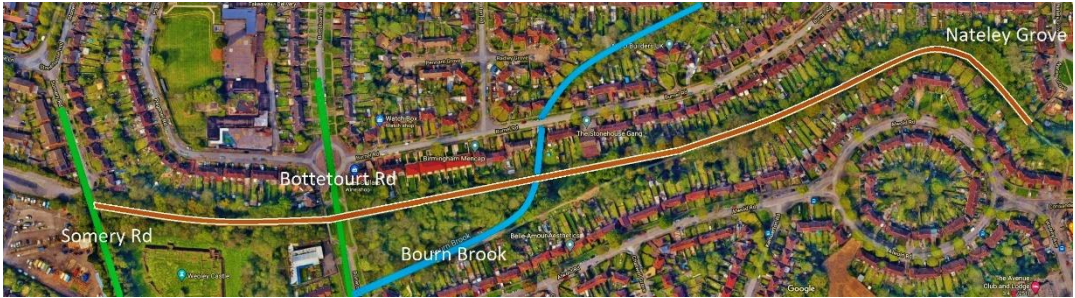


*Helped by the warden and his chain saw*



## 8. Litter picking

Our volunteers are always pleased to help with litter picking, this year we worked with Friends of Selly Oak Park and also removed litter between Somery Rd Bridge and Nataly Grove.



clear the rubbish around Somery Road Bridge and

Thanks to our committee member John Lines, Councillor for Bartley Green, and our Chair Andrew Hardie for gathering volunteers to



the canal route past Weoley Castle to Bottetourt Road. The large enthusiastic team of volunteers included local councillors, and Northfield MP Gary Sambrook; we are also continually grateful for the help and support of Andy

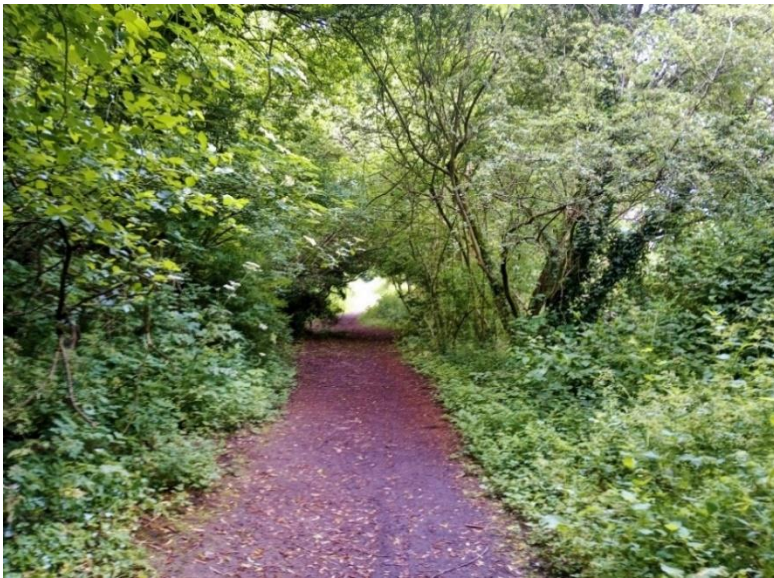


Street, who took a couple of hours' break from his campaign trail to give us a hand. Two large truck loads of rubbish were removed. A very good day for all.





Big thanks for sterling work by Paul Smith's family and his volunteer litter-pickers for clearing more than half a mile of the path along the route of the canal from Somery Rd towards Selly Oak. It is a beautiful route, and we were fortunate with perfect weather. Easy to understand the attraction of having a new path alongside the canal, it will surely prove to be very popular.





# General Items

## 9. Political Support

We are fortunate in receiving support from Members of Parliament, Councillors from Birmingham and Dudley and the Mayor of the Combined Authority and their staff. In the last Newsletter we featured a meeting with James Morris, MP for Halesowen & Rowley Regis, reviewing progress on the Leasowes. In this issue we show support



from Gary Sambrook MP for Northfield, Andy Street and local councillors helping with litter picking.

A few weeks ago Andrew and Hugh were very pleased to be asked by Steve McCabe, MP for Selly Oak, to meet him to review our project and to be brought up to date on progress. We were able to confirm that after some contractual delays work was expected to start on the turning area in September. Steve is very supportive and commented on his Facebook page “A

vibrant canal-side will not only be good for nature, but it will also be a great feature in Selly Oak. Extraordinary effort has been made to fund the project, with half a million pounds of funding raised to start the project, however another half a million pounds is remaining to be raised. Details of the fundraiser can be found on [www.lapal.org](http://www.lapal.org)” This item was on our own

Facebook page and reached over 9,500 viewers.

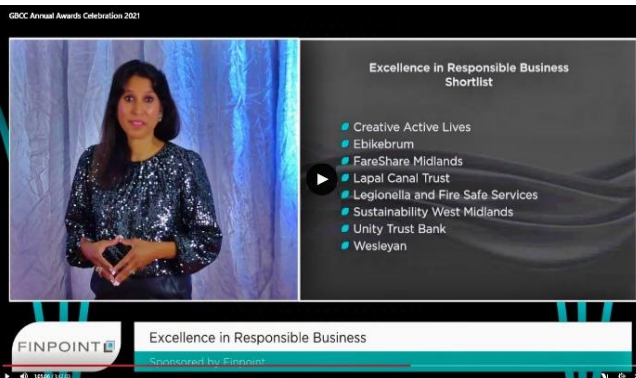


## 10. Short listed for Award



We were surprised and delighted to be shortlisted for the award "Excellence in Responsible Business", by the Birmingham Chamber of Commerce at their annual award ceremony in August. There was a record number of participating companies.

Congratulations to the other companies shortlisted in the category and to 'Wesleyan' the well-deserved winner. Overall winner was Shellforce, established



in 1839 and manufacture doors and windows, to their credit they have a very high proportion of employees with disabilities.

## 11. Archiving Oral History, Research relating to the Dudley No. 2 Canal

Tony, our Treasurer and Membership Secretary, who used to live by the canal requests "I am gradually collecting any information relating to the history of the Dudley No.2 If you have any images, published articles or personal stories you are willing to share, please contact me, Dr Tony Whateley on 07751100810 or [t.whateley@sky.com](mailto:t.whateley@sky.com). I am particularly keen to meet up with anyone who has memories of the canal in water from Selly Oak to the eastern portal of the Lapal Tunnel."

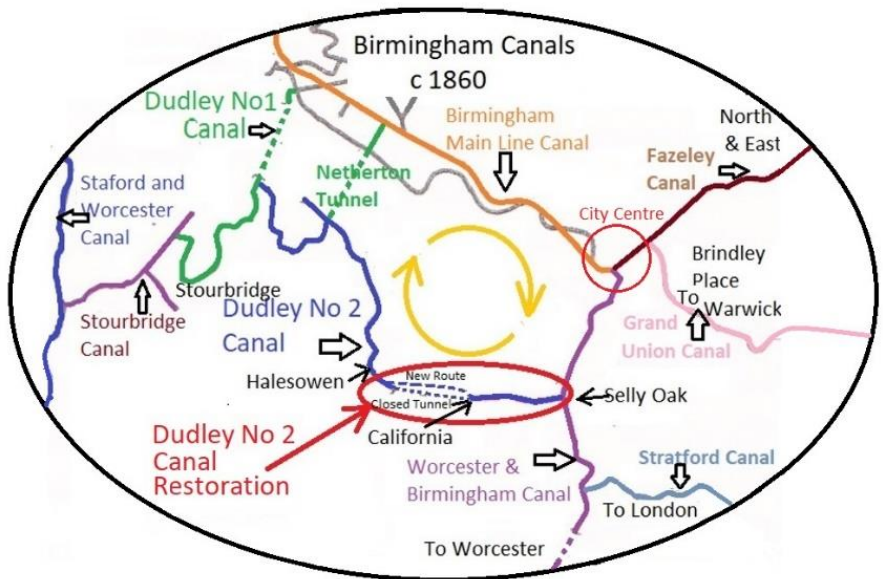


## 12. Leaflet on the Canal Ring

We wanted to appeal to funders interested in the whole canal project, hence we have a 4 page leaflet, the following is an extract.

### Help Restore the Complete Birmingham Canal Ring

In 1798 Lord Dudley completed his vision of a Birmingham City Centre By-Pass canal around the Birmingham suburbs. The first canal in the link, designed by James Brindley, was the Birmingham Main Line Canal opened in 1772. 26 years later the Dudley No2 Canal completed the canal ring and lasted for 120 years until the Lapal Canal Tunnel collapsed in 1917. Our vision is to reinstate the 26-mile canal ring.



We have begun restoring the 5.5-mile-long closed section of the Dudley No 2 Canal. We intend protecting our heritage for future generations to appreciate and enjoy and to provide a unique recreational activity; a calm ring of water and fragrant towpaths around Birmingham to be enjoyed by all. In 2007 a comprehensive study confirmed the feasibility. The restoration would make existing historical features more accessible and provide tourist opportunities by water and towpath. There are renovation and business opportunities across a wide area of Southern Birmingham.



## Route of the to be Re:

Leasowes 1798



Hawne Basin Marina



Shenstone Gardens 1755



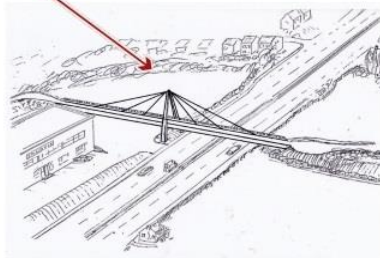
Large



Halesowen



Halesowen Abbey 1215



Manor Way Bridge



New Triple



# stored Dudley No 2 Canal

Selly Oak - Work in progress



Marina in California



Selly Oak



Locks and Cafe



Weoley Castle 1260



Harborne Wharf 1798

# Donation / Membership Form

**I/We would like to pay by:**

**Standing Order:** Please complete the SO form below and post to your bank

**Bank transfer:** Please remit to Lapal Canal Trust, HSBC, Account No. 91517856,  
Sort Code: 40-23-03 using your last name as the reference

**PayPal:** Please visit our website [www.lapal.org](http://www.lapal.org)

**Cheque:** Please make payable to Lapal Canal Trust and send  
to Dr T L Whateley, Lapal Canal Trust, 285 Harborne Road,  
Birmingham, B15 3JB Phone 07751100810

**Are you eligible for Gift Aid relief: Yes / No**



*New QR code takes  
you directly to PayPal*

## Bank Standing Order Form

To: Your Bank

Name .....

Address .....

.....

Post Code: .....

Your Sort Code: .....Your Account Number: .....

Your Account Name: .....

Please pay £                      annually from 1st                      until further notice to:

Lapal Canal Trust. HSBC    Account No. 91517856 Sort Code: 40-23-03

Signed: .....

Date: .....



# Membership Application Form

(Regd Charity no: 1013845)

I / We wish to become members of the LAPAL CANAL TRUST

Name:.....

Address:.....

.....Postcode.....

Phone No:.....Email Address:.....

## GIFT AID:

As a registered charity the Trust is able to claim  
gift aid from basic rate taxpayers

Please indicate if you are willing for us to do this:

YES / NO I AM / I AM NOT A BASIC RATE TAXPAYER

## Membership Categories & Rates (Please State Amount in the Appropriate Box)

TYPE	ANNUAL	10 YEAR	STATE
Adult	£12.00	£108	
Family or Couple (inc. Children)	£20	£180	
Pensioner/Junior/F. T. Student	£6	£54	
Corporate	£30	£250	

Signature:.....

I / We enclose full payment of £.....

Please make cheques payable to: Lapal Canal Trust  
and return this completed form and remittance to:

Dr Tony Whateley, LCT Membership Secretary,  
285 Harborne Road, Edgbaston, Birmingham B15 3JB

email: [membership@lapal.org](mailto:membership@lapal.org) | Telephone 07751 100810

Payment can also be made via PayPal from our website [www.lapalcanalproject.co.uk](http://www.lapalcanalproject.co.uk).

Please also send an email to: [membership@lapal.org](mailto:membership@lapal.org) if you join or rejoin via PayPal.

Payment by Standing Order. Please complete the form on page 26.

I agree that the Lapal Canal Trust will hold membership details in accordance with GDPR May 2018 and does not share this information with any other organisation and may send me future communications. YES ☐

The Lapal Canal Trust is a registered charity (no 1013845) and a non-profit distributing company limited by guarantee, registered in England (no 2721675) Registered office: 18 St Georges Close, Birmingham, B15 3TP.

Founded in 1990 for the conservation and restoration of the Dudley No. 2 Canal from Hawne Basin, Halesowen to Selly Oak

My Main Interests are:

Please tick relevant box / boxes

The Entire Lapal Canal	
Western End (Halesowen)	
Eastern Section (Selly Oak)	
Angling	
Boating	
Conservation	
Environment	
History / Heritage History	
Walking / Jogging / Cycling	

*If you can help with IT matters and Newsletters  
then please contact [membership@lapal.org](mailto:membership@lapal.org)*

**Website:** [www.lapal.org](http://www.lapal.org)

**Facebook:** [www.facebook.com/lapalcanaltrust](https://www.facebook.com/lapalcanaltrust)

**Twitter:** [@LapalCanalTrust](https://twitter.com/LapalCanalTrust)