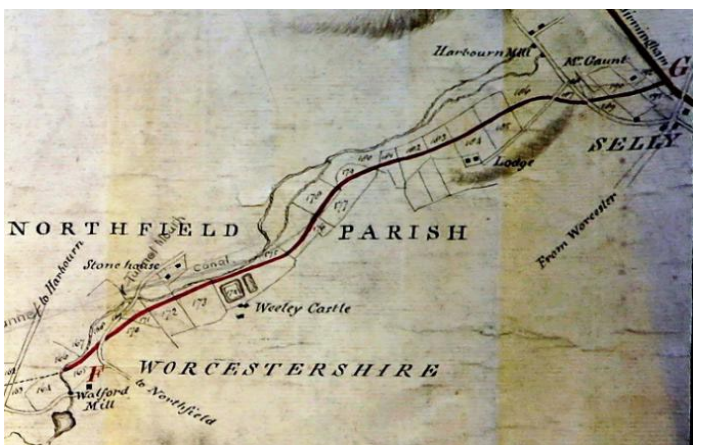




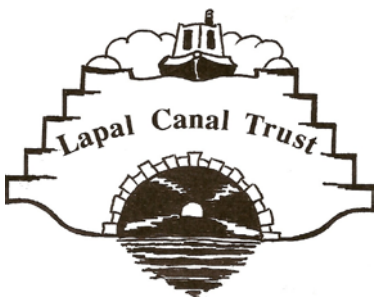
Restored Canal link and Marina in California

A restoration project linking past and future use of the Dudley No 2 canal from Selly Oak

www.lapal.org
www.facebook.com/lapalcanaltrust



1792 Survey map by John Snape



Current Plan

The Lapal Canal Trust is planning to restore this historic section of the Dudley No2 Canal from Selly Oak to California to provide a beautiful green walking and cycling route as well linking to the much loved Birmingham to Worcester Canal network. A new Marina is planned in California, the canal and marina will be a catalyst to regenerate the area, becoming a popular tourist attraction with many new jobs.



Restoration of this beautiful Canal will ensure that more people share its beauty and convert a muddy neglected route into a popular walking and cycling route. It will attract wild life enthusiasts, anglers and boaters.



1. Battery Park Section (340 metres)



The first section of restoration is being brought forward as part of regeneration of the old Battery Park site. Under a section 106 agreement between the developer and Birmingham City Council a funding package of £2.9m has been agreed to build the canal, winding hole and two bridges. One bridge over the Worcester and Birmingham and Canal and the second where the Worcester and Birmingham Canal tow path crosses the junction with the Dudley No 2 Canal. The cost of lowering the gas main running under the tow path is not included.



2. Harborne Lane to the western end of Selly Oak Park (490 metres)



Planning permission was granted in 2015 and 2000 cubic metres of soil was removed by Careys to help restore the Harborne Wharf basin.



Careys removing the soil from Harborne Wharf Nov 2015

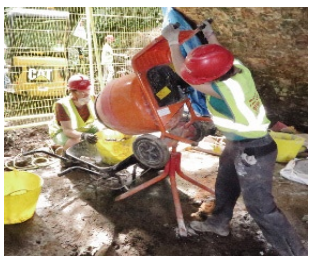


Wharf filled with rain water January 2016

In August 2016 The Waterways Recovery Group volunteers restored the canal side wall.



WRG and Lapal Trust volunteers



Mixing cement, part of Duke of Edinburgh Award scheme



Weoley Park Bridge cleared by WRG in August 2016

3. From the Western end of Selly Oak Park to Bottetourt Road (1330 metres)



This is a filled in section and a muddy footpath runs along the route. It is a neglected area and offers regeneration opportunities. A bridge will be installed to cross the canal, possibly a draw bridge to replace the bridge demolished in 1928. The route includes a triangle of land, the canal would enable its use for off line moorings and also better use of the pleasant woodland.



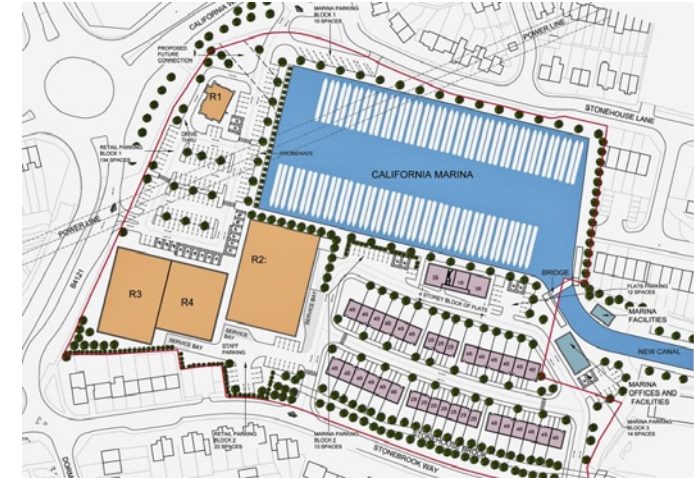
4. Bottetourt Road via Weoley Castle to California Marina (410 metres)



This section passes Weoley Castle, a moated Manor house built in 1260. There is scope to make much better use of this historic monument, possibly part restoring the moat. It is believed that some of the stone was used in 1795 to help build the canal. Three locks will be built to take the canal level of 138m to the proposed marina level of 147m.

5. California Marina Site (3.8 hectares)

A marina will be built at the landfill site in California linked to the Worcester & Birmingham Canal. The Marina would help to transform this area of Birmingham; it is an investment opportunity and provides many new homes and jobs. We can expect over 100 boats to have permanent moorings along the route and in the Marina. Revenue from moorings and additional licenses would generate some £200,000, part of which would contribute to maintenance of the canal.



Concept plan of the marina

On the south side of the canal it should be possible to incorporate a purpose built boatyard business, with a dry dock, possibly a slipway to enable boats to be maintained, and lay-by moorings for a hire boat fleet. The boatyard would provide another reason for boats to divert off the Worcester & Birmingham Canal and use the eastern end of the Dudley No2 Canal.

