

# Lapal Link

Newsletter of the  
Lapal Canal Trust

Spring / Summer

2022



# Lapal Canal Trust Committee Members

## President

Dr Peter Best

## CEO

Hugh Humphreys OBE

## Technical Officer

Peter Fisher

## Deputy Treasurer

Michael Payne (IWA)

## Volunteer Co-ordinator

Denis Pike (WB&DCS)

Dave Pearson (IWA/ BCNS)

John Hemingway (WB&DCS)

John Worwood (Calthorpe Res Soc.)

Janella Kolas

Richard Chivers

Kerry Brewer

Neil Frank (WB&DCS)

Chair of Birmingham University Conservation Volunteers

Biographies of our committee can be found on our web site [www.lapal.org](http://www.lapal.org)

## Chair

Dr Andrew Hardie

## Treasurer & Membership Secretary

Dr Tony Whateley

## P R and Press Officer

John Lines

## Fundraising & Web site

Justin Malpass

Paul Smith

Roy Burgess

Malcolm Bates

David Struckett (IWA)

David Scowcroft

Arthur Moppett

Monica Hardie

Dominic Stanford

## Advisors

### Legal

Toni Weston Partner Gowling WLG

### Financial

Laurence Parkes Independent Examiner

### Advisory Board to Oversee and Advise the Lapal Trust Committee.

<b>John Hudson OBE.</b>	Chair of C&RT West Midlands Advisory Board Formerly High Sheriff of West Midlands and for 20 years Chairman of Birmingham Airport.
<b>Peter Mathews CMG.</b>	Past Chair of West Midlands Waterways Partnership.
<b>John Cloughton.</b>	Retired Chief Master of King Edwards School.
<b>Steve McCabe.</b>	MP for Selly Oak.
<b>Laura Shoaf.</b>	Managing Director Transport West Midlands.
<b>David Cox OBE.</b>	Bike West Midlands Network.
<b>Traci Dix-Williams.</b>	CEO Dudley Canal & Tunnel Trust.
<b>Beverley Nielsen.</b>	Director of Institute for Design & Economic Acceleration (IDEA), Birmingham City University.
<b>Anthea McIntyre.</b>	Former MEP for the West Midlands.
<b>Tristan Chatfield.</b>	Councillor for Weoley and Selly Oak Ward.
<b>Nicholas Crombie.</b>	Trustee Birmingham & Black Country Wild Life Trust.

Founded in 1990 for the conservation and restoration of the Dudley No 2 Canal from Hawne Basin, Halesowen to Selly Oak. The Lapal Canal Trust is a registered charity (no 1013845) and a non-profit distributing company limited by guarantee, registered in England (no 2721675). Registered Office: 18 St Georges Close, Birmingham B15 3TP.



[www.lapal.org](http://www.lapal.org)  
[www.facebook.com/lapalcanaltrust](https://www.facebook.com/lapalcanaltrust)

Thanks to John Hemingway for cover photo



# Contents

## Committee Members

## Advisory Board

## Chair's Introduction - AGM Report – Accounts for 2021

## News Items

### Progress with work

1. Whitehouse Wharf with recent press releases
2. Progress Reports
3. Planning Application
4. Fundraising progress.

### Engaging with the Community

5. IWA Festival of Water
6. Walk the Line
7. Working with Sense
8. National Lottery Community Fund Award

### Volunteer Work Parties.

9. Birmingham University Students.
10. Litter picking
11. WRG Summer Camp

### General Items

12. YouTube Videos
13. Presenting to Local Societies
14. Archiving and Oral history.
15. Leaflet on Canal Ring

## Membership Application and Standing Order Form

### Dates for your diary

29<sup>th</sup> of April to May 2<sup>nd</sup> St Richard's Canal Festival Vines Park Droitwich  
 13<sup>th</sup>, 14<sup>th</sup> 15<sup>th</sup> May – Bradley Restoration gathering at Bradley workshops  
 25<sup>th</sup> of June Selly Oak Festival Selly Oak Park.  
 June, opening of Whitehouse Wharf  
 25, 26<sup>th</sup> June Commonwealth Cruise through Birmingham organised by BCNS.  
 17<sup>th</sup> of September (provisional) Walk the line from Selly Oak to Halesowen.  
 September Black Country Boating Festival in September at Windmill End Junction, Netherton

### Andrew Hardie – Chair's Introduction

Welcome to our Newsletter with information on current activity and future plans. We are immensely grateful for the support we have received, with the latest donation taking the total raised to over half a million pounds; We have recently submitted a revised planning proposal for the link passing Sainsbury's with costs being reduced. We are driven by the knowledge that we risk losing the £724k Section 106 Agreement if we fail to start on the final section before November 2025. We are preparing a proposal for help from the Levelling Up Fund



## AGM Report

The 31st AGM of the Trust was held using Zoom on the 25th of October. The accounts for 2020 and committee members were confirmed. The Directors and Trustees were re-elected except for Roy Burgess who decided to step down. Roy was a founder member in 1990 and Andrew Hardie, our Chairman, thanked Roy for his dedicated service, Roy has kindly agreed to continue as committee member. Andrew proposed that Justin Malpass and Paul Smith should become Directors and Trustees to which both agreed and this was confirmed. There was a presentation of last year's activity and Tony, our treasurer commented that the 2020 accounts were available on the Charity Commission Web site.

## Accounts for 2021

These were Independently Examined by Laurence Parkes and approved by our committee on the 14<sup>th</sup> of February 2022. The committee thanked Laurence for his diligent examination. Tony transferred the financial report to the Charity Commission Web site where it was registered on the 7<sup>th</sup> of March. In summary income for 2021 was £45,367 and expenditure £5,745. Total Funds carried forward was £424,255.. Income is mainly restoration appeal donations and will be used in 2022 to fund the construction of Whitehouse Wharf (Winding Hole)

# Progress with the work

1. **Whitehouse Wharf.** Previously referred to as the Winding Hole.





## On the 23<sup>rd</sup> of February we issued a press release to confirm that agreement had been reached with M & G Real Estate, Sainsbury's and Canal and River Trust to construct Whitehouse Wharf

This will enable canal boats to turn and enter and exit the to be restored Dudley no 2 Canal that used to link Selly Oak to Halesowen and the coal fields in Dudley. We have so many people to thank for bringing us to this point. First the community represented by the community Partnership for Selly Oak (CP4SO), and in particular Canal & River Trust and M & G Real Estate and Sainsbury's, the main leaseholders and their lawyers who have worked so hard over the last 15 months to prepare the rather complex legal arrangement. Special thanks to our lawyer Toni Weston of Gowling WLG who have supported our project over many years. Also thanks to the CBRE who are responsible for managing the site, they quickly produced a requested Condition Report and the Technical Review carried out by Hollis Global.

The detailed design was completed by Tony Gee & Partners LLC appointed by our contractor Land and Water Services

**Dr Andrew Hardie**, Chair of the Lapal Canal Trust expressed his appreciation of the help received from all the parties involved. Especially M & G Real Estate and Sainsbury's who have donated their leases in favour of the Canal and River Trust who owns the Freehold. The Canal and River Trust have kindly agreed to maintain the new turning area.

The new water feature completes the development of Whitehouse Wharf and forms part of the Selly Oak Shopping Centre owned by M & G Real Estate, and provided as a public amenity. The new area will be an attractive calming water feature in the heart of Selly Oak, to be enjoyed by all canal users - including canoeists, paddle boarders, and anglers. It is large enough to be a convenient destination for trip boats to and from central Birmingham. A very pleasant 55 minutes journey along the Worcester and Birmingham Canal, taking in a beautiful green corridor not yet seen by many residents. The work to construct the new area could only be possible because of the generous support of the 50 charities, companies, and individuals who have helped to fund the project. The larger funders are Veolia, Garfield Weston, Headley Trust, Landsec, Unite Students, Jabbs, the Rowland Trust, and the four Cadbury Family Trusts."

**Rupert Milne** M & G Director Responsible for the development, said: "We are very pleased to have the opportunity of supporting this community project and to help make Selly Oak a more attractive place to live and work. We look forward to working with the Lapal Canal Trust to restore the canal across our shopping centre and opening the route to Selly Oak Park."



On the 8<sup>th</sup> of March a further press release was issued to confirm that Andy Street, Mayor of the West Midlands, had started the work on the restoration of the Dudley No 2 Canal in Selly Oak.

We were delighted when Andy Street kindly agreed to start our project to build a new turning area to enable boats to enter the restored Dudley No 2 Canal. Andy, who has supported the project for many years was welcomed by Dr Andrew Hardie, Chair of the Lapal Canal Trust, who recently signed a £300,000 contract with Land & Water, to build the first Selly Oak section of the Dudley No 2 Canal. This is the start of a 3 month project, despite the rain we were delighted with the excellent turn out of helpers including John Hudson, Chair of our Advisory Board, Barry Toon, Chair of the Community Partnership for Selly Oak and Mike Palmer, Chair of the Inland Waterways Recovery Group whose volunteers help to repair our canal walls and are scheduled to return in August to build a disabled compatible turn-over path in Selly Oak Park.

The area includes a bridge linking the new shops to Selly Oak town centre, the remains of a lime kiln and a new public square. The large water area is designed to enable boats to turn,



enter and exit the soon to be restored Dudley No 2 Canal. The Lapal Canal Trust is now focused on raising the further funds required to complete the restoration to Harborne Lane Bridge, which must be completed by 2025.





**Andy Street** Mayor of the West Midlands:

“Congratulations to the Trust on the progress made. This is a hugely important project for Selly Oak and the wider region, and I endorse it wholeheartedly. Our canals provide a safe and enjoyable way for residents to exercise, commute and connect with nature. We are all grateful for their restoration work, and I look forward to attending the grand opening in June.”



**Richard Parry** Canal & River Trust Chief Executive:

“The Midlands canals form the heart of the UK’s waterways network and have gone from playing a vital role in the Industrial Revolution to the vibrant spaces enjoyed by both boaters and waterside communities today. The Canal & River Trust is committed to preserving this important heritage and is pleased to work with the Lapal Canal Trust in taking care of this valuable new water space.”

2. Every Wednesday the Trust provides a work progress report on Facebook, these are summarised as follows.  
Project is expected to take 12 weeks

#### WHITEHOUSE WHARF - Progress Report. Week 1



Protective aluminium sheets installed, equipment delivered and earth moving started on Monday, topsoil removed and stored for reuse. First half of Sheet Metal Piling exposed. Next stage is to expose the 2nd line of piling and



extend the sheet piling to the water’s edge, and to start to remove the soil.

(As part of the required provision for the canal restoration the sheet metal piling to within 3 metres of the water’s edge was installed under a previous contract for the developer Landsec. The previous contract which included the canal bridge with disabled access and attractive public area was awarded to Land and Water Ltd; Lapal Canal Trust has employed the same contractor to build the winding hole. We would have preferred the work to have been done at the same time, but this was not possible.)

## WHITEHOUSE WHARF - Progress Report. Week 2

All the top soil has now been removed. The long line of the sheet metal piling has been uncovered and the bank started to be formed. Work started preparing for linking the existing piling to the canal edge. Shomsur Khan Snr Works Engineer from C&RT was visiting to review progress.



## WHITEHOUSE WHARF - Progress Report. Week 3

- Busy removing the excess soil, with 760 tons of spoil removed - 38 lorry loads.
- Bank is now formed with some top soil replaced.
- Next week adjusting the height of the sheet piles, removing more spoil, and starting to instal a fabric dam



## WHITEHOUSE WHARF Progress Report Week 4

- Preparatory work for fabric coffer dam in hand.
- Removing soil to access the previously installed sheet piling.
- Starting to adjust the height of the sheet piling to for capping.

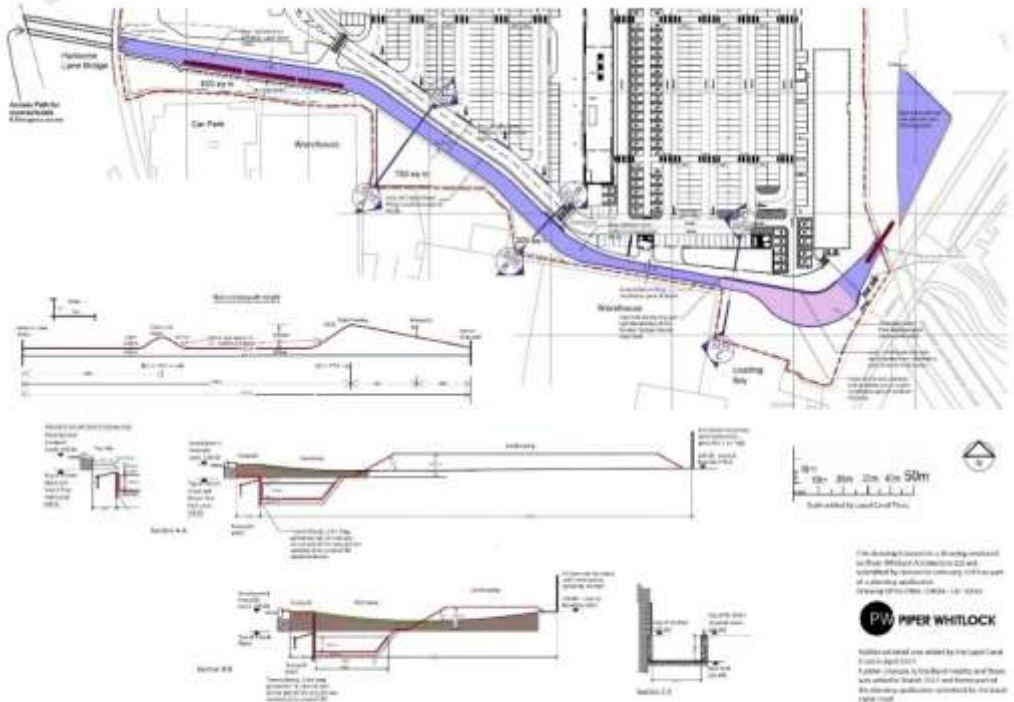






### 3. Planning Application

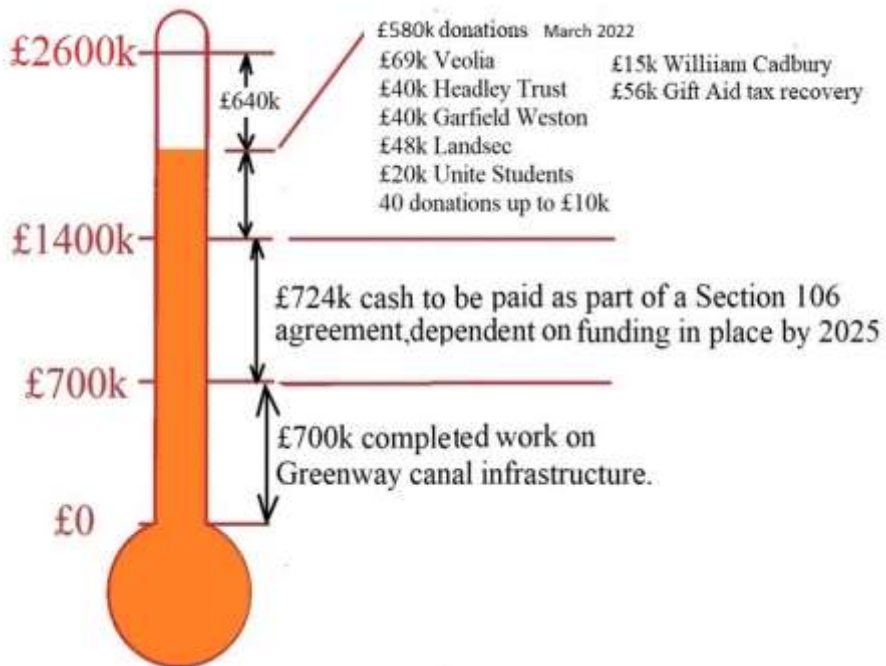
The restoration work is covered by three planning applications; for restoration of the swing bridge and the canal past Sainsbury's planning approval was granted in 2017. the canal is wider than strictly needed and our committee agreed to reduce the width in order to better manage the cost, and also to provide for more soil to be retained on site in accordance with best sustainable practice.



## 4. Fundraising

With Covid creating many difficulties for charities fundraising has been more difficult, but the situation seems to be improving. At the beginning of the year, we were very pleased to have received £75,000 from the Veolia Environmental Trust as part of the Landfill Communities fund. This completed the funding needed for Whitehouse Wharf. The information was released as a press release with supportive quotations from Adnan Saif, regional Director of the Canal and River Trust, Brigid Jones Deputy Council Leader and Andy Street Mayor of the West Midlands Our Facebook entry reached 11,500.

We also received £15,000 from the William Cadbury Charitable Trust and we were delighted to receive this additional support from the Cadbury Family Trusts. The Cadbury family has supported canals from 1870.



We would also like to thank the following for their generous contribution to this project - Headley Trust, Careys, GJW Turner Trust, Henry James Sayer Charity, Worcester Birmingham & Droitwich Canals Society, Inland Waterways Association, Heritage Lottery Fund, Jabbs Trust, Rowland Trust, Grimmitt Trust, Patrick Trust, Gowling WLG, Geoff Hill Trust, Collins /Sayer Trust, Birmingham Common Good Trust, Richardson Foundation, Cook & Wolstenholme Charitable Trust, P G Sharpe, Keith & Joan Mindelson Charitable Trust, Bernard Piggott Charitable Trust, Dumbreck Charity, Edward Cadbury Charitable Trust, CB & HH Taylor 1984 Trust, donation in memory of Dr Ian Langford and Thomas Hickman, subscribers of canal magazines. Beekeepers Association, Bournville Society, Richard

Cadbury Charitable Trust, Langdale Trust, Saintbury Trust, The Roger & Douglas Turner Charitable Foundation, Selly Park Gardening Club, Birmingham Canal Navigation Society, Ratcliff Foundation, John Feeney Charitable Trust, Tim Watts of Pertemps, Aviva, Unite Students, Aurelius Charitable Trust, William Cadbury, Baron Davenport, Oakley Trust, Mrs Patricia Hickman in memory of Thomas Roy Hickman, Terry Stanton family and friends, Ed Lambourne, Bentley family Trust, donation from followers of the Whitlock YouTube Video, and many members of the Lapal Canal Trust.

The trust is actively looking for more financial support. Contact details for donations can be found at the back of this Newsletter and on the web site: [www.lapal.org](http://www.lapal.org) or on our Facebook page: [www.facebook.com/lapalcanaltrust](https://www.facebook.com/lapalcanaltrust)

The Trust is a Charity recognised by Amazon Smile so please when ordering from Amazon use Amazon Smile with the Lapal Canal Trust as your nominated charity. The trust will receive 0.5%



## Engaging with the community

The Lapal Canal Trust Committee warmly encourages everyone interested to participate in planned events, share their views, and help us to decide on development of the restoration of this important historic Birmingham Canal. In particular we would like to thank the Community Partnership for Selly Oak (CP4SO). It's an umbrella organisation bringing together a number of groups in the ward for the purpose of injecting a local, community view into the planning process. The group also has direct representation from local residents and businesses.

### 5. Festival of Water



The three-day IWA Festival of Water was held in Worcester over the August bank holiday, lots to see, rides, Morris dancing, interesting stalls and boats on display. Lots of interest in the Worcester Birmingham & Droitwich Canals Society stand, with Lynne staffing the shop and Tony busy making free badges. Big thanks to WB&DCS's help in allowing us a corner to display our pictures and literature. Lots of interest and support for our appeal

with huge appreciation to all the volunteers who helped out over the Bank Holiday weekend.



## 6. Walk the Line of the canal

Walk the Line 2021. Almost 50 walkers enjoyed a beautiful day for our annual walk along the route of the canal from Selly Oak to the Leasowes in Halesowen. Big thanks to all the walkers and for their interest in restoring the Dudley No 2 Canal. Special thanks to our guides Peter and Simon and to Helen and Jill for providing tea/coffee and cakes/biscuits at the journey's end. Very grateful for all the donations amounting to over £110



*Jill, Helen and Peter provided Tea and cakes*



## 7. Working with Sense

Thanks to Jon Fearn we are delighted to have been able to resume our monthly boat trips for SENSE. Photos and reports from Facebook.



**November 2021** very pleased to welcome carers Jo & Chloe from Tanglewood, the Sense home in Malvern. Jon commented that everyone loved the whole experience. It was a beautiful Autumn day and we passed under the new footbridge for Birmingham University Station. The group walked around Centenary Square and the Library before catching the boat for the return trip to Selly Oak with cups of tea and biscuits.



**December 2021** With storm Barra looming and heavy rain with 50 mph gale forecast it was with some trepidation that we started out to meet our SENSE passengers, wondering if we were brave or foolish. Fortunately, despite some strong gusts all went well with the stove keeping us warm and cosy. The return trip from Selly Oak to



Brindley Place with a visit to the library top floor was much appreciated, a first-time experience for the carers and their charges. Thanks to all the carers for their magnificent work and especially to Jon for making all the arrangements and providing tea and biscuits, not forgetting Steve who helped with the steering.



**January 2022** With Carers and Residents from the SENSE House on Gough Rd, with the sun shining and 11C, Spring seemed to have come early. Ducks and geese having a great time. Today our party visited a bit further afield walking to the beautiful St Phillip's Cathedral and with organ music in the background the Chaplin said a prayer and thanked the carers for working throughout the pandemic. A chance also to give thanks for some

good news, a grant from the National Lottery Community Fund to expand our trip programme to include schools and the elderly in addition to the disabled.



**February 2022** Today's journey started with heavy rain, making up for all the good weather recently enjoyed. For most the first experience of a canal boat journey so enjoyed by all, our journey to the convention centre and a chance to explore the library. Our squirrel stove did its job of keeping us nice and warm while Jon treated everyone to tea and biscuits.







**March 2022** Nice sunny day for our monthly trip with SENSE, an opportunity to celebrate the National Lottery Community Fund who have helped the Lapal Canal Trust expand our community programme to include schools and the elderly as well as the disabled. This trip was for the disabled and their carers from Station Road in Cotteridge. The group visited St. Philip's Cathedral and the chaplain was very welcoming. On the

way we could see Whitehouse Wharf under construction, the first phase of the restoration of the Dudley No 2 Canal and soon to be the new pick-up point. Again, heart-felt thanks for the wonderful work of the carers and to Jon for all the arrangements – especially tea and Jaffa cakes.



*Visit St Phillips Cathedral*



## 8. National Lottery Community Fund award £10,000 to the Lapal Canal Trust (LCT).

We are very grateful to the National Lottery Community Fund for agreeing to fund a pilot scheme to provide boat trips for the elderly, people with disabilities, school children and minority groups that would benefit from the companionship, calmness and education of a canal experience. Since 2017 as part of a need to strengthen community links LCT has been working with SENSE to provide monthly boat trips for the disabled, recently resumed after Covid interruption. The boat trips start from Selly Oak where SENSE HQ is situated by the junction of the to be restored Dudley No 2 Canal and the Worcester Birmingham Canal. Jon Fearn SENSE Outdoor Development Co-ordinator comments. "These trips have proven to be a wonderfully enjoyable experience for all involved. The cosy confines of the boat, coupled with the hypnotically relaxing pace of the journey and the gentle throb of the engine, all combine to create a brilliant sensory environment for us to work successfully with many of the people we support."

We have just had our first experience of working with schools, it was a delight to meet so many excited children. The trip was arranged by headmaster Stuart Smith for two classes at St Mary's School. Mr Smith commented "We are very grateful to the National Lottery Community Fund for the fantastic opportunity offered to the school. The



participating pupils were learning about Birmingham's Canals for several weeks prior to the visit and this really brought it to life for them and it rounded off their projects perfectly. ". For most it was their first experience of a canal boat trip. Big thanks to Terry and his crew from



Brindley Cruises for arranging the trip and explaining canal features to the children, it's planned that future trips will be shared with three of Birmingham based canal trip boats.



The application to National Lottery Community Fund was made by LCT with the support of Jon Fearn of SENSE, Matt Daniels. Age UK Birmingham, Head of Development and Partnership, and Kieran Mckenzie, the Active Wellbeing Society- Health Communities Programme Manager. A LCT steering committee will manage the activity.



Dr Andrew Hardie Chair of LCT and also Chair of Birmingham Crises Centre commented "By providing a service for the disabled, elderly and local schools we expect to provide community support where its most needed. We understand that Covid restrictions have greatly added the number of those experiencing loneliness and we will endeavour to identify lonely people within our community and to provide a memorable day out. Opportunity to socialise and maybe make new friends. The pilot programme will allow us to strengthen and develop relationships and to measure the



results to see if the expected outcomes are being delivered. To date we have mainly worked with SENSE, providing a wider scheme for the elderly and schools. We would like to say a huge thank you to the National

Lottery Community Fund, and to National Lottery Players, as this funding will make a huge difference to the mental health and wellbeing of those we support."

# Volunteer work

## 9. Birmingham University Students

Huge thanks to Tom and his team from Birmingham University Conservation Volunteers (BUCV) for giving their time on Sunday morning to help the Lapal Canal Trust. Good day clearing the overgrown path and removing litter from Harborne Wharf. Quite an international group from China, India, Nigeria, Tanzania, Spain, Wales and England.



## 10. Litter Picking

Thanks to Paul for arranging a further very successful litter pick from Somery Rd to Bottetourt Rd and beyond. Also big thanks to all the volunteers and the support of 4 councillors and MP Gary Sambrook. Following heavy rain in the morning our prayers were answered with a nice sunny afternoon – great day.





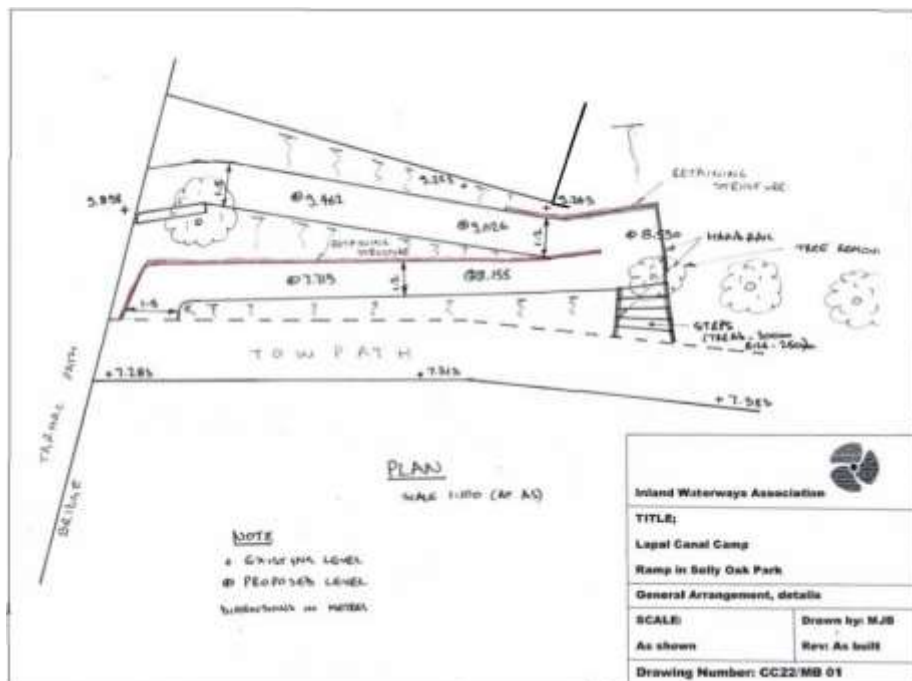
Amazing what can be achieved by dedicated litter pickers, clearing litter and fly tipped waste from the bottom of Bottetourt Rd. Thanks also to council staff for removing the collected pile. Again big thanks to Paul for arranging, and to members of the Lapal Canal Trust and local residents for a brilliant effort. Now looking forward to bluebells appearing, thanks to Claire for spreading wildflower seed. Looking forward to spring.



## 11. Preparing for IWA Waterways Recovery Group Summer camp

At the beginning of the year we were very pleased to have a visit from Mikk, Jenny, and Jonathan from the Inland Waterways Association to review our application for a summer work camp. We plan to improve the tow path and build a new path to the 1796 canal bridge in Selly Oak Park which will have a new role as a turnover bridge. They also checked the accommodation kindly offered by the Stonehouse Gang. Before leaving for their next appointment they quickly reviewed the current status of the work to restore the canal link from the Worcester Birmingham Canal to Harborne Lane Bridge.





When the canal is restored along Harborne Wharf we will need to use the existing old bridge to transfer the tow path to the park side. A new path will need to be built to disabled standard and the Water Recovery Group has been asked to help do the work in the summer. WRG's Mikk Bradley helped by Mike Palmer very kindly offered to carry out a detailed survey to estimate the extent of the work required. The rise is 2.6m requiring a 30m long path. Thanks also to our Peter Fisher for his help and taking notes and photos.



The date for our summer camp will be 6<sup>th</sup> to 13<sup>th</sup> of August, Stone house gang has agreed to provide accommodation



## 12. YouTube Videos

**Paul and Rebecca Whitewick** are specialists in producing very interesting YouTube presentations on disused railways and canals. We were very fortunate that in September last year we had a surprise call from Paul asking if the Lapal Canal Trust could meet to discuss the restoration of the Dudley No 2 Canal. The YouTube video is the result – not quite a TV star is born – but excellent publicity for the Trust and £500 donated.



## Andy Tidy also has an excellent video of the Dudley no 2 Canal

We have been following Andy's Canal Hunter series for some time and very good it is too particularly with the colour enhancement sections showing Roy in the little boat by Manor Way Bridge. Both Andy and Helen take their boats to rallies selling jams and chutneys etc. They were at the Festival of Water in Worcester



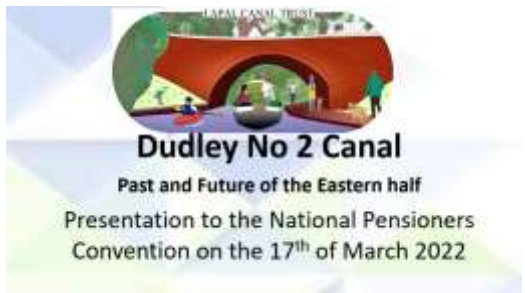
## 13. Presenting to Local Societies

The Trust is always interested in giving presentations on the History and Restoration of the Dudley No 2 Canal. If you would like a presentation, please contact Hugh on [nbhugh@gmail.com](mailto:nbhugh@gmail.com). Recent presentations have been to the Halesowen branches of the TUC and the National Pensioners Convention. Thanks to Tony Whitehouse for the invitation to present to the Halesowen branch of the Pensioners' Convention – active in improving provision for pensioners. The presentation was on the history and future of the Dudley No 2 Canal. Thanks to the Chairman for opening the meeting by remembering Ukraine, and to the audience for interesting questions. An Invitation was recieved to return in a year with time for

Lapal Canal Trust  
TUC  
PRESENTATION  
2<sup>ND</sup> November, 2021



more information and review of progress. If you are interested in a presentation contact the Trust via our web page [www.lapal.org](http://www.lapal.org).



## 14. Archiving Oral History, Research relating to the Dudley No. 2 Canal

Tony, our Treasurer and Membership Secretary, who used to live by the canal requests "I am gradually collecting any information relating to the history of the Dudley No.2 If you have any images, published articles or personal stories you are willing to share, please contact me, Dr Tony Whateley on 07751100810 or [t.whateley@sky.com](mailto:t.whateley@sky.com). I am particularly keen to meet up with anyone who has memories of the canal in water from Selly Oak to the eastern portal of the Lapal Tunnel."



## 15. Leaflet on the Canal Ring

We wanted to appeal to funders interested in the whole canal project, hence we have a 4 page leaflet, the following is an extract.

### Help Restore the Complete Birmingham Canal Ring

In 1798 Lord Dudley completed his vision of a Birmingham City Centre By-Pass canal around the Birmingham suburbs. The first canal in the link, designed by James Brindley, was the Birmingham Main Line Canal opened in 1772. 26 years later the Dudley No2 Canal completed the canal ring and lasted for 120 years until the Lapal Canal Tunnel collapsed in 1917. Our vision is to reinstate the 26-mile canal ring.



We have begun restoring the 5.5-mile-long closed section of the Dudley No 2 Canal. We intend protecting our heritage for future generations to appreciate and enjoy and to provide a unique recreational activity; a calm ring of water and fragrant towpaths around Birmingham to be enjoyed by all. In 2007 a comprehensive study confirmed the feasibility. The restoration would make existing historical features more accessible and provide tourist opportunities by water and towpath. There are renovation and business opportunities across a wide area of Southern Birmingham.



## Route of the to be Re:

Leasowes 1798



Hawne Basin Marina



Shenstone Gardens 1755



Large



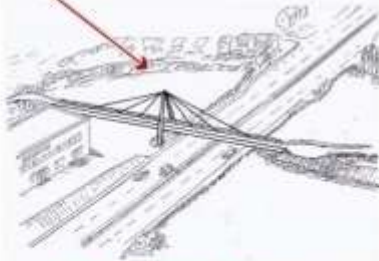
Halesowen



Visitor Centre



Halesowen Abbey 1215



Manor Way Bridge



New Triple





# Donation / Membership Form

**I/We would like to pay by:**

**Standing Order:** Please complete the SO form below and post to your bank

**Bank transfer:** Please remit to Lapal Canal Trust, HSBC, Account No. 91517856, Sort Code: 40-23-03 using your last name as the reference

**PayPal:** Please visit our website [www.lapal.org](http://www.lapal.org)

**Cheque:** Please make payable to Lapal Canal Trust and send to Dr T L Whateley, Lapal Canal Trust, 285 Harborne Road, Birmingham, B15 3JB Phone 07751100810

**Are you eligible for Gift Aid relief: Yes / No**



*New QR code takes  
you directly to PayPal*

## Bank Standing Order Form

To: Your Bank

Name .....

Address .....

.....

Post Code: .....

Your Sort Code: .....Your Account Number: .....

Your Account Name: .....

Please pay £                      annually from 1st                      until further notice to:

Lapal Canal Trust, HSBC    Account No. 91517856 Sort Code: 40-23-03

Signed: .....

Date: .....



# Membership Application Form

(Regd Charity no: 1013845)

I / We wish to become members of the LAPAL CANAL TRUST

Name:.....

Address:.....

.....Postcode.....

Phone No:.....Email Address:.....

## GIFT AID:

As a registered charity the Trust is able to claim  
gift aid from basic rate taxpayers

Please indicate if you are willing for us to do this:

YES / NO I AM / I AM NOT A BASIC RATE TAXPAYER

## Membership Categories & Rates (Please State Amount in the Appropriate Box)

TYPE	ANNUAL	10 YEAR	STATE
Adult	£12.00	£108	
Family or Couple (inc. Children)	£20	£180	
Pensioner/Junior/F. T. Student	£6	£54	
Corporate	£30	£250	

Signature:.....

I / We enclose full payment of £.....

Please make cheques payable to: Lapal Canal Trust  
and return this completed form and remittance to:

Dr Tony Whateley, LCT Membership Secretary,  
285 Harborne Road, Edgbaston, Birmingham B15 3JB

email: [membership@lapal.org](mailto:membership@lapal.org) | Telephone 07751 100810

Payment can also be made via PayPal from our website [www.lapalcanalproject.co.uk](http://www.lapalcanalproject.co.uk).

Please also send an email to: [membership@lapal.org](mailto:membership@lapal.org) if you join or rejoin via PayPal.

Payment by Standing Order. Please complete the form on page 26.

I agree that the Lapal Canal Trust will hold membership details in accordance with GDPR May 2018 and does not share this information with any other organisation and may send me future communications. YES ☐

The Lapal Canal Trust is a registered charity (no 1013845) and a non-profit distributing company limited by guarantee, registered in England (no 2721675) Registered office: 18 St Georges Close, Birmingham, B15 3TP.

Founded in 1990 for the conservation and restoration of the Dudley No. 2 Canal from Hawne Basin, Halesowen to Selly Oak

My Main Interests are:

Please tick relevant box / boxes

The Entire Lapal Canal	
Western End (Halesowen)	
Eastern Section (Selly Oak)	
Angling	
Boating	
Conservation	
Environment	
History / Heritage History	
Walking / Jogging / Cycling	

*If you can help with IT matters and Newsletters  
then please contact [membership@lapal.org](mailto:membership@lapal.org)*

**Website:** [www.lapal.org](http://www.lapal.org)

**Facebook:** [www.facebook.com/lapalcanaltrust](https://www.facebook.com/lapalcanaltrust)

**Twitter:** [@LapalCanalTrust](https://twitter.com/LapalCanalTrust)